

Notes:

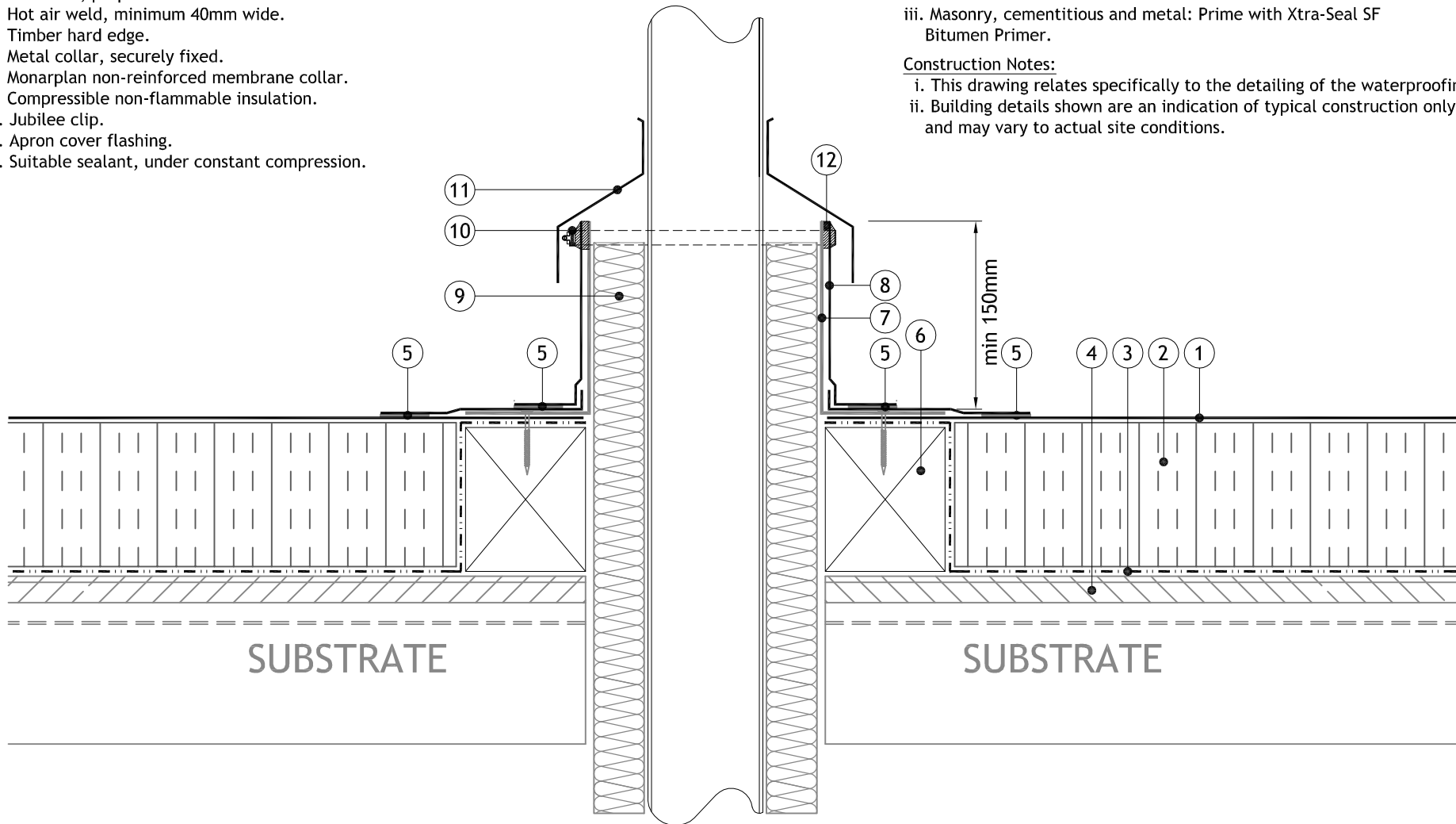
1. Icopal Monarplan FM single-ply membrane.
2. Thermazone insulation, mechanically fastened.
3. Icopal Micoral NB Vapour Control Layer.
4. Substrate, prepared in accordance with current instructions.
5. Hot air weld, minimum 40mm wide.
6. Timber hard edge.
7. Metal collar, securely fixed.
8. Monarplan non-reinforced membrane collar.
9. Compressible non-flammable insulation.
10. Jubilee clip.
11. Apron cover flashing.
12. Suitable sealant, under constant compression.

Preparation Notes:

- i. Plywood & OSB3 sheets: Tape joints with HT 125 Taping Strip, 100mm wide.
- ii. Timber boarding: Apply Icopal HT180 layer nailed at staggered 150mm centres.
- iii. Masonry, cementitious and metal: Prime with Xtra-Seal SF Bitumen Primer.

Construction Notes:

- i. This drawing relates specifically to the detailing of the waterproofing.
- ii. Building details shown are an indication of typical construction only, and may vary to actual site conditions.



Drawing Title:	Warm Roof to Hot Service Penetration			Date:	14/04/2011	Drawn By:	WF	Checked By:	SAS
System:	Icopal Monarplan (Mechanically Fastened)			Scale:	1:4 @ A4	Rev.			
Dwg. No:	MP-W-07-04-MF								
This detailed drawing is to recommend the correct procedures for installing ICOPAL products. All other building details are thus shown indicatively and are not to be used for building construction									
This drawing has been prepared for general information purposes only. (Do not scale - use figured dimensions only.)									
© THIS DRAWING AND THE DESIGN THEREIN IS THE EXCLUSIVE PROPERTY OF <u>ICOPAL LIMITED</u> . IT SHOULD NOT BE COPIED OR REPRODUCED WITHOUT CONSENT AND SHALL BE USED ONLY IN REFERENCE TO MATERIALS OR GOODS SUPPLIED BY THEM.									
							© Technical Department. Icopal Limited, Barton Dock Road, Stretford, Manchester M32 0YL. Telephone: 0161 865 4444 Fax: 0161 865 8433 email: technical.uk@icopal.com Web: www.icopal.co.uk		

